

**O. P. JINDAL SCHOOL, SAVITRI NAGAR**  
**Half Yearly Examination (2019 – 2020)**

**Class: V**

**MM: 80**

**Subject: Social Science**

**Time: 2 Hrs.**

Name: \_\_\_\_\_

Roll No.: \_\_\_\_\_

---

***(Fifteen Minutes Extra will be given for reading the Question Paper.)***

***General Instructions: All the questions are compulsory.***

- i). This question paper has five sections: Section A, Section B, Section C, Section D and Section E.*
- ii). Section A contains objective questions.*
- iii). Section B contain short question.*
- iv). Section C contain long question.*
- v). Section D contains Map.*
- vi). Section E contains identification of pictures.*

---

***Section A***

**Q1.Fill in the blanks:**

**(1×6=6)**

- i) \_\_\_\_\_ is a fixed path on which the earth revolves around the sun .
- ii) The amount of \_\_\_\_\_ present in air is called humidity.
- iii) The forests in the DRC are \_\_\_\_\_ .
- iv) \_\_\_\_\_ is the main hunting weapon of the Inuit.
- v) The most useful animal in the desert is the \_\_\_\_\_
- vi) The thick layer of fat under the skin of the animals belonging to the polar region is called \_\_\_\_\_ .

**Q 2.Choose the correct option:**

**(1x 5 =5)**

- i) An imaginary line that passes through the North and South Poles  
(a) Artic Circle                      (b) Equator                      (c) Axis                      (d) Orbit
- ii) When the Northern Hemisphere receives direct sunlight, it experience  
(a) Summer                      (b) Autumn                      (c) Winter                      (d) None of these
- iii) A city is expected to experience moderate type of climate if it is locate  
(a) at the Equator                      (b) near the sea                      (c) at the Poles                      (d) None of these

iv) A long undersea rail tunnel in Japan is  
(a) Pan American Highway (b) Indo-Tibet Road (c) Seikan Tunnel (d) Kyber pass

v) The biggest sea port of DRC is  
(a) Uganda (b) Belgian Congo (c) Matadi (d) Mount Stanley

**Q 3.State whether the following statements are true or false: (1×5=5)**

- i) The prairies are located in the torrid Zone \_\_\_\_\_
- ii) The world's first aeroplane was invented by the Wright Brothers. \_\_\_\_\_
- iii) Guglielmo Marconi has invented Fax \_\_\_\_\_
- iv) The replication of text and images is possible due to printing \_\_\_\_\_
- v) The first printing press was invented in London \_\_\_\_\_

*Section B*

**Q4. Answer the following questions:**

- i) Distinguish between weather and climate (2)
- ii) What are icebergs? (2)
- iii) What do you understand by the following terms a) ranch b) silo? (2)
- iv) What are highways? (2)
- v) What is television? Who invented it ? (2)

**Q5. Answer the following question:**

- i) What effect do winds have on the climate of an area? (3)
- ii) Describe the location and climate of the DRC (3)
- iii) Describe the climate of Greenland. (3)
- iv) How has the government of Saudi Arabia used its resources to become one of the richest countries in the world? Explain. (3)
- v) Describe any two points of the climate and the location of the prairies. (3)
- vi) What do you understand by i) Inland water ways ii) Ocean transport. (3)
- vii) How is radio helpful as means of mass communication? (Any three Points) (3)
- viii) Define printing .What are two advantages of Printing? (1+2)

### Section C

**Q6. Answer the following question:**

- i) What is mass communication? Write a short note on internet and social networking. (2+3)
- ii) Write a short note on flora and fauna of DRC. (5)
- iii) What are heat zones? Explain any two heat zones with help of diagram. (5)

### Section D

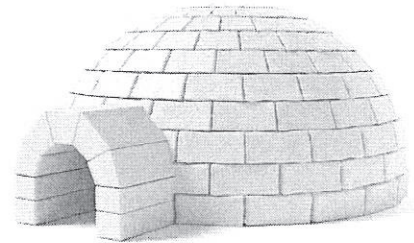
**Q7. Locate the following on outline map of the world: (1×5=5)**

- i) Show grasslands of the World :- (a) Prairies (b) Velds (c) Downs
- ii) Sahara Desert iii) Atacama Desert

### Section E

**Q8. Identification of picture and write one sentence about it: (2×5=10)**

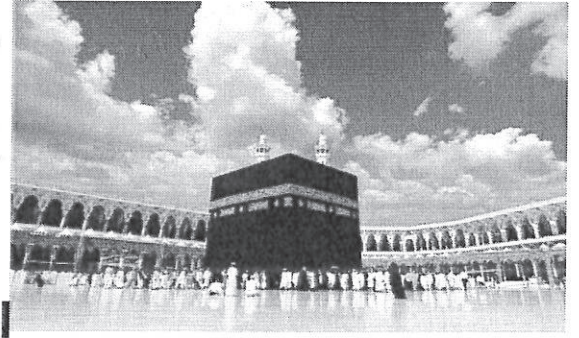
i)



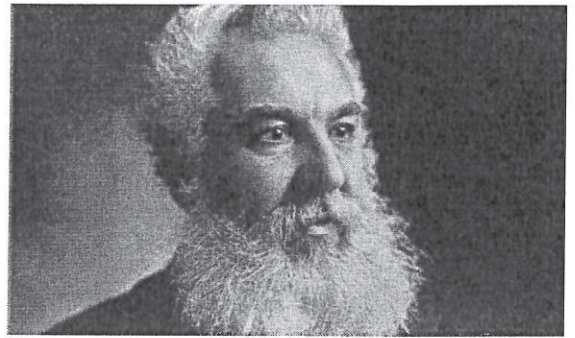
ii)



iii)



vi)



v)

